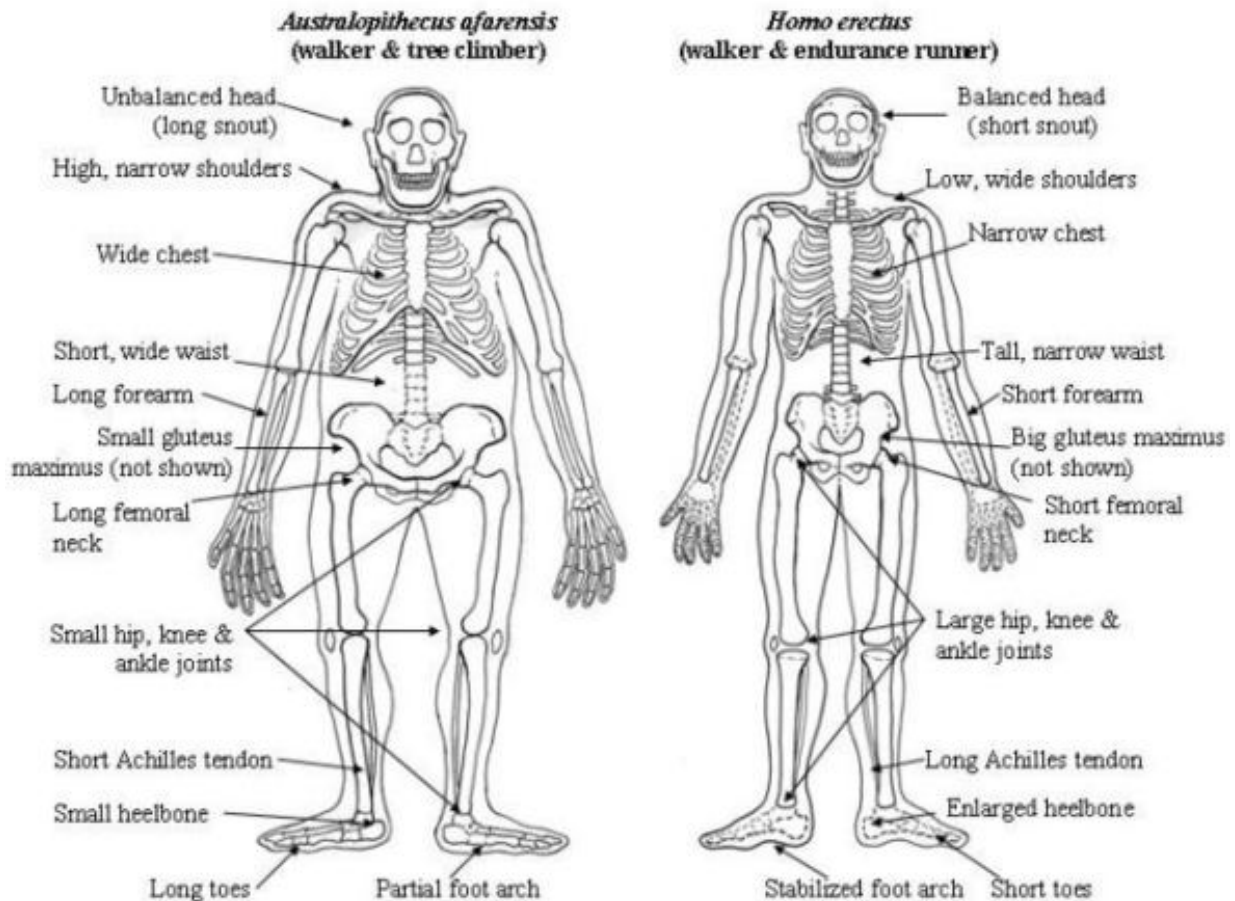


IELTS Writing Practice Test 6

TASK 1 (20 minutes)

The diagram shows the skeletal systems of two ancestors of modern human beings.

Write a 150-word report for a university lecturer describing the diagram and making comparisons where relevant.



TASK 2 (40 minutes)

In many developed countries, life expectancy is rising while birthrates are falling. As a result, the elderly will make up a much larger proportion of the population in future.

Is this a positive or negative development?

You should write at least 250 words.